

PARTS OF SECTIONS 11, 12, 13, 14, T. 6 N., R. 3 E., S. L. B. & M.
CAUSEY ESTATES SUBDIVISION NO. 3

92

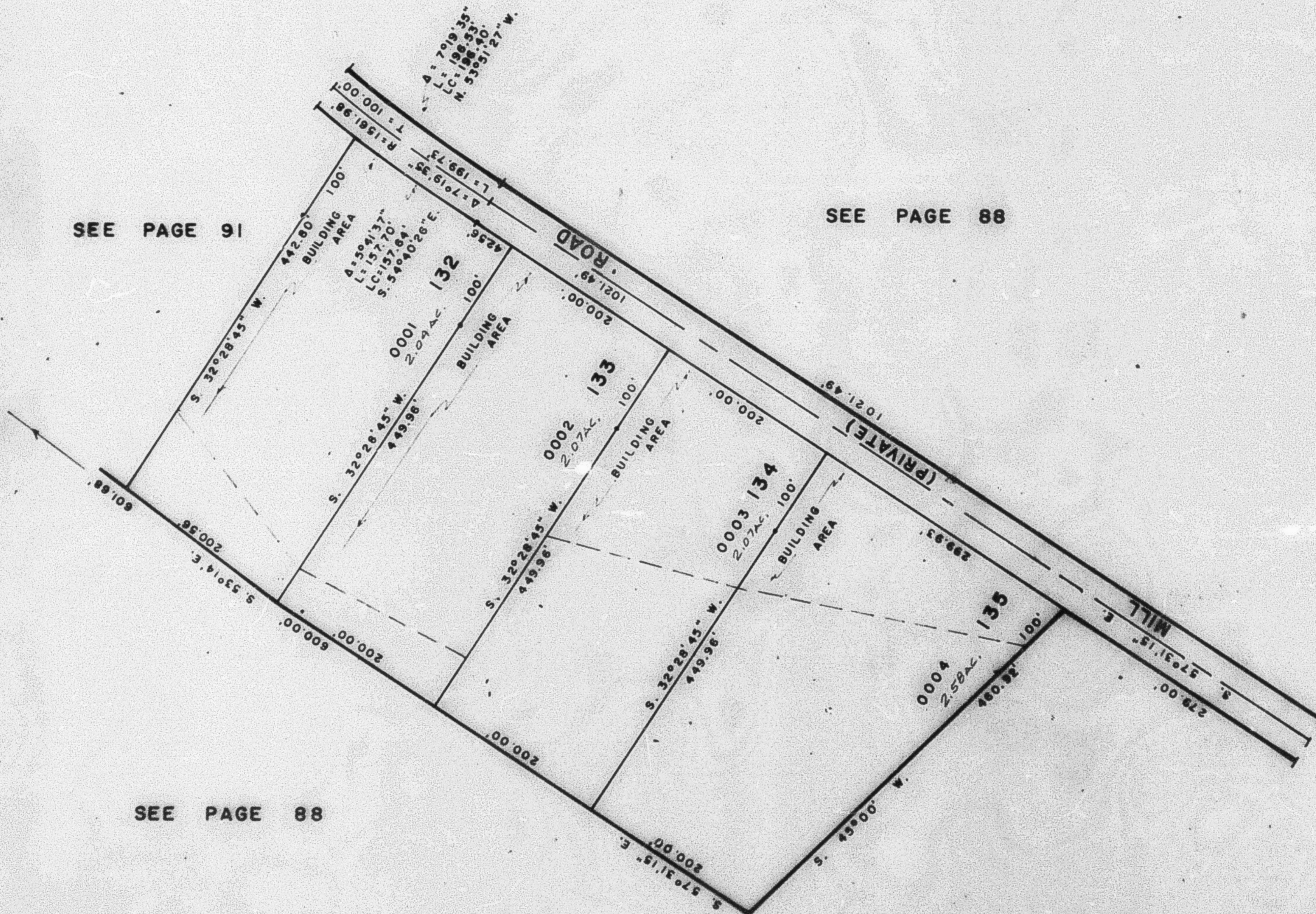
LOTS 132-135
IN WEBER COUNTY

TAXING UNIT: 58

SCALE 1" = 100'

PREFIX: 23-092

EXCEPT WHERE OTHERWISE SHOWN
ALL LOTS OWNED BY:
BASIN LAND DEVELOPMENT CO.



SEE PAGE 91

SEE PAGE 88

SEE PAGE 88

FOR COMPLETE ENG. DATA
SEE ORIG. DED. PLAT IN
BOOK 24, PAGES 38, 39, 40.

SEE PAGE 93